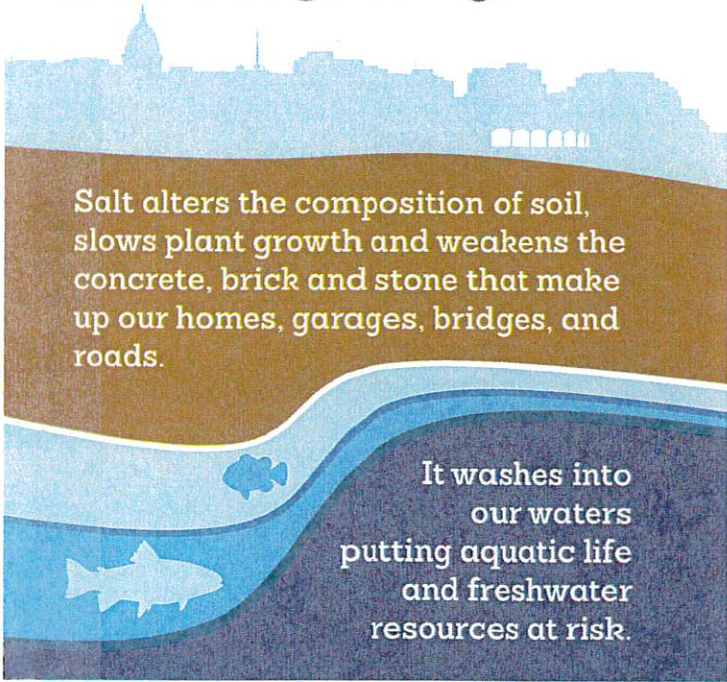


# Wisconsin Salt Wise

Once you put salt down, it doesn't go away!



It only takes **1 teaspoon of salt** to **pollute 5 gallons of water**



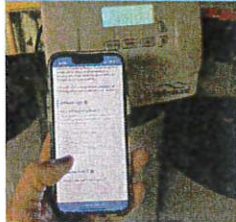
Learn more at:



[www.wisaltwise.com](http://www.wisaltwise.com)

## Ready to be Salt Wise?

Protect **freshwater** by following these simple steps! Learn more about the **ABCs of home water softening** at [www.wisaltwise.com](http://www.wisaltwise.com).



### Assess your softener

Our 5-minute home self-screen helps you evaluate your softener and recommends next steps.



### Basic testing

Are you drinking salty water? Ensure that your family, pets, and plants (both indoor and out) are not drinking softened water. Softening cold water is unhealthy and wasteful.



### Check the settings

Even newer systems may be inefficient if they aren't adjusted for your household's water usage and local hardness levels.



### Ditch the clunker

All softeners lose efficiency over time. Really old systems may regenerate after a set number of days regardless of water usage.



### Explore salt-free

Depending on your hard water tolerance, salt-free technologies that reduce scale without the use of salt may be an option.

[www.wisaltwise.com](http://www.wisaltwise.com)